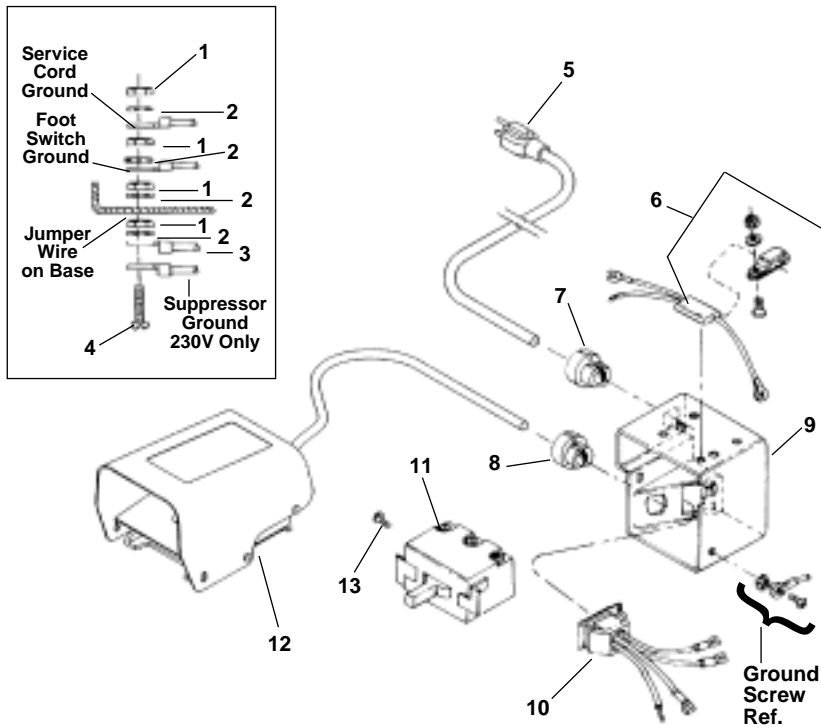


**Electrical Components – Early Style**

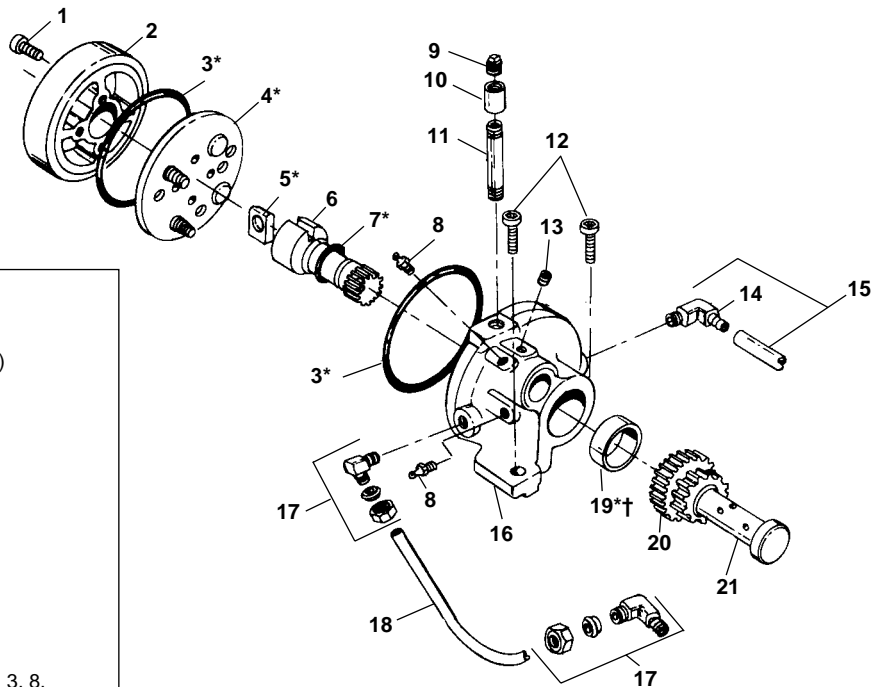


**NOTE: Order parts by Catalog Number only.  
DO NOT order by Reference Number.**

Ref. No.	Catalog No.	Description
1	44695	Hex Nut #10 - 24 (4)
2	46985	Ext. Tooth Washer #10 (4)
3	85925	Jumper Wire
4	92455	Screw #10 -24 x 3/4"
5	46740	Power Cord w/Plug (115V)
	46410	Power Cord w/Plug (230V)
	75045	Power Cord less Plug (230V Europe/S. Africa)
6	46320	Suppressor Kit (230V Europe)
	99170	Suppressor (230V S. Africa)
7	46735	Cord Grommet
	46730	Cord Grommet (230V Europe/S.Africa)
8	46735	Cord Grommet
9	50612	Switch Box
10	50617	Outlet Jumper Assembly
11	44505	Switch
12	36642	B-294 Foot Switch
13	44180	Screw

† Refer to Page 21 for Wiring Diagram.

**Model "A" Pump**



Ref. No.	Catalog No.	Description
—	47195	Pump Complete
1	46770	E-896 Screw #10-32 x 1" SHCS (4)
2	46350	E-557-1 Cover
3*	44650	E-1552 O-Ring (2)
4*	46645	E-850-1X Valve Assembly
5*	47100	F-610 Rotor Blade
6	46355	E-557-2 Pinion Shaft
7*	44645	E-1551 O-Ring
8	46860	E-912 Grease Fitting
9	46815	E-904 Pipe Plug
10	89725	E-1159 Coupling
11	89730	E-3246 Nipple
12	46750	E-892 Screw 3/8"-16 x 1" SHCS (2)
13	44455	E-1370 Set Screw 5/16" x 3/8"
14	87945	E-1325 90° Fitting
15	75065	E-1326X Intake Line
16	43470	C-445-1X Pump Body (Incls. Ref. Nos. 3, 8, 16, 19, Roller Bearing)
17	46840	E-907-1 90° Fitting (2)
18	44105	D-864 Feed Line
19*†	46715	E-886-1 Oil Seal
20	44350	E-1266 Idler Gear
21	44345	E-1265-1 Gear Shaft
—	91055	E-10484 Repair Kit (Includes items marked with *)

†Service Note: When replacing Oil Seal, open side should face towards outside of Pump Body. Use care in installing Seal so that lip is not damaged.